

ZZPERFORMANCE

Installation Instructions
3.25" LNF Fenderwell Intake



Estimated Installation Time:

Installation Difficulty:

Kit Contents:

- 1 – LNF Intake Pipe
- 1 – MAF Extension Harness
- 2 – M4 x 12MM Socket Head Screws (Installed)
- 1 – 3.25" LNF Silicone Intake Coupler
- 1 – LNF PCV Tube (Installed)
- 1 – #52 Worm Clamp
- 1 – #36 Worm Clamp
- 1 – #6 Worm Clamp (Installed)
- 1 – AF-2 ZZP Air Filter

Tools Needed:

- 3/8" Drive Ratchet
- 1/4" Drive Ratchet
- 10MM Deep Socket
- 8MM Socket
- 7MM Socket
- 7MM Wrench
- Flathead Screwdriver
- Push Pin Remover (or More Flatheads)

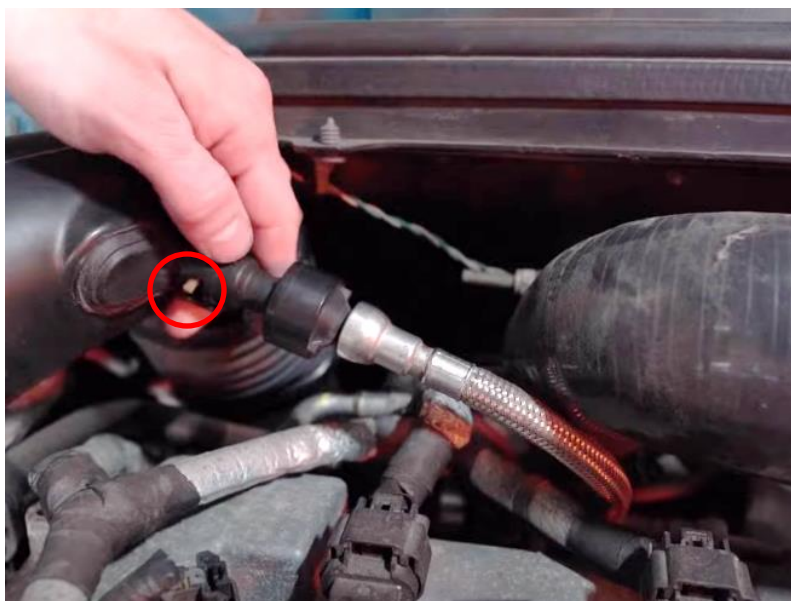


STEP ONE:

Unplug your MAF sensor from the stock intake.

STEP TWO:

Disconnect your PCV by pushing down on the little white tab shown.



STEP THREE:

Loosen and move the clamp (circled) and remove the (2) 10mm bolts at the rear of the air box that are holding it in (arrows).

STEP FOUR:

Slide the intake tube off of the air box, and then reach down in front of the air box and pull up on the fitting to make the air box free. After pulling up on the fitting you should be able to remove the air box.



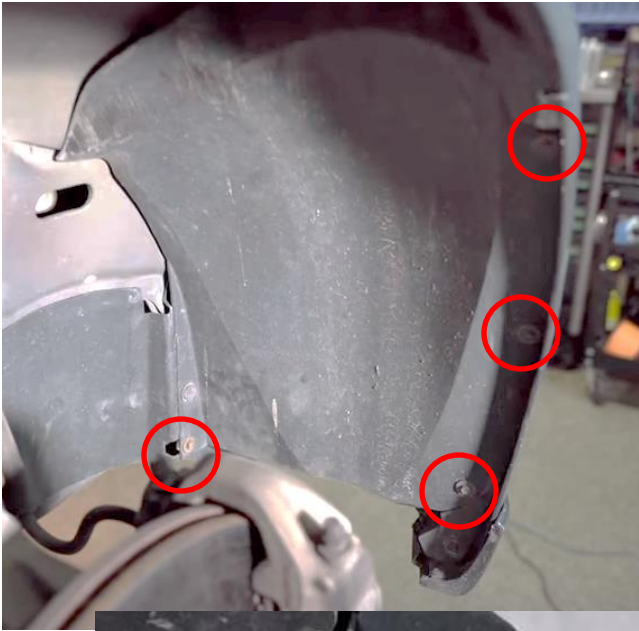
STEP FIVE:

Now your last step is to loosen and remove the T-bolt clamp holding the plastic intake tube onto the turbo. This can be done using an 8mm socket or a flathead screwdriver. Once loose, you may remove the tube.



STEP SIX:

You will now want to lift the front of front of the vehicle into the air and secure with jack stands. Once the vehicle is in the air go ahead and remove the passenger side front tire.



STEP SEVEN:

Once the tire is off you will want to start removing the fender liner. It is held in with 4 (7mm) bolts (circled) and 1 push clip in the wheel well as well as 4 bolts under the vehicle, 2 are hidden so reference photos for exact locations.



STEP EIGHT:

Once you have the fender liner loosened up, go ahead and push it back and out of the way to gain access behind.

STEP NINE:

You can now remove the push connect and 1 (10mm) bolt holding in the lower stock intake tube. Once these are removed, go ahead and pull that tube out. After removing that tube, reinstall the 10mm bolt that you removed.



STEP TEN:

You will now want to go back to the stock air box and remove the MAF sensor and transfer it to your new ZZP intake tube.



STEP ELEVEN:

When installing your MAF sensor into your new ZZP intake tube. The arrow on the sensor should be facing the long end of the tube (like shown). The sensor should only fit 1 way.



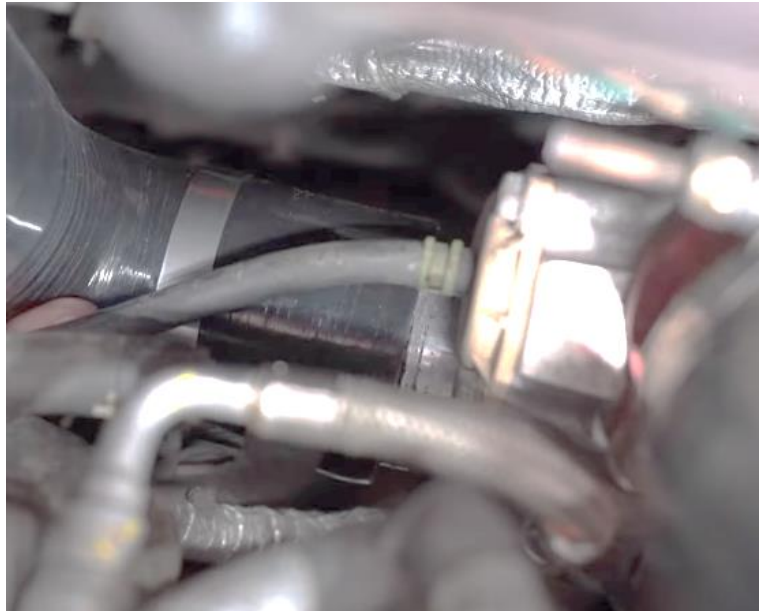


STEP TWELVE:

You next step in the install will be installing your new silicone coupler onto your turbo. Before you do this, slide the #36 worm clamp onto the coupler first. Installing the coupler onto the turbo can be difficult due to the thickness of the silicone. We recommend taking some silicone paste and applying it to the inside of the smaller inlet on the coupler (like shown).

STEP THIRTEEN:

After lubricating and installing your clamp, you can now slide the silicone coupler down into the hole where your turbo is. Once you have the coupler down in the hole, reach down with your other hand and use it to push the coupler onto the turbo inlet. Make sure that your clamp is turned so that it is able to be reached to tighten it down in the future, but do not tighten it yet.



STEP FOURTEEN:

You can now slide the MAF end of your intake tube down into the hole for the fender well.



STEP FIFTEEN:

Slide the clamp onto the other end of your silicone coupler, and line up the pipe with the coupler.



STEP SIXTEEN:

Now you can push your tube into your silicone coupler. When doing this make sure you get the coupler over the bead rolled lip on the pipe to ensure that your clamp will hold when you go to tighten it down. Do not tighten your clamp yet.



STEP SEVENTEEN:

Once you have the coupler on the pipe properly you will want to use the studs from the factory air box to properly line up and hold your pipe. Once you get the pipe to a point where it is not touching anything, go ahead and tighten the nut.





STEP EIGHTEEN:

You can now go back and tighten the clamp from the intake tube to the coupler, and also the clamp on the turbo inlet.

STEP NINETEEN:

Your next step will be to plug in your PCV connection.

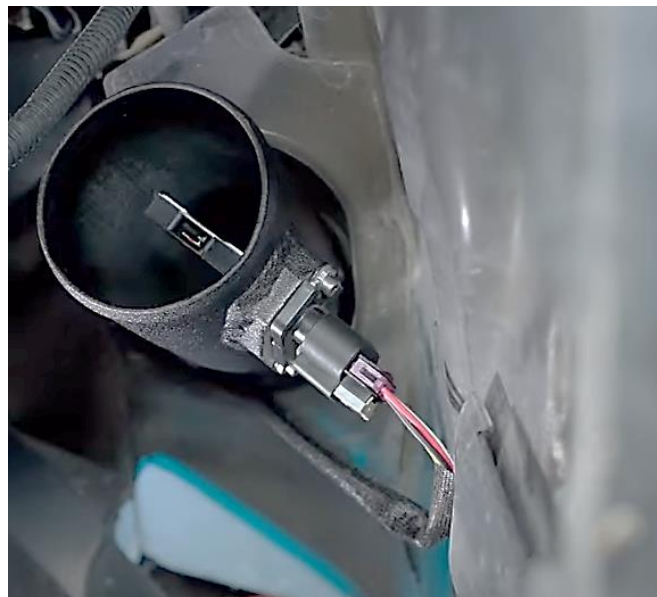


STEP TWENTY:

You will now feed your MAF extension harness up from the fender well area alongside the intake pipe and plug it in. We recommend pushing away from the engine to avoid heat causing any issues.

STEP TWENTY ONE:

You can plug the other end of the extension harness into the MAF sensor.



STEP TWENTY TWO:

You may now install and tighten down your air filter onto the end of the intake tube. After installing make sure the filter is not rubbing against anything.

STEP TWENTY THREE:

You can now reinstall you fender liners, put your wheel back on, and put your vehicle down on the ground. After these steps you are complete with the installation of your new ZZPerformance 3.25" Fenderwell Intake. Enjoy!